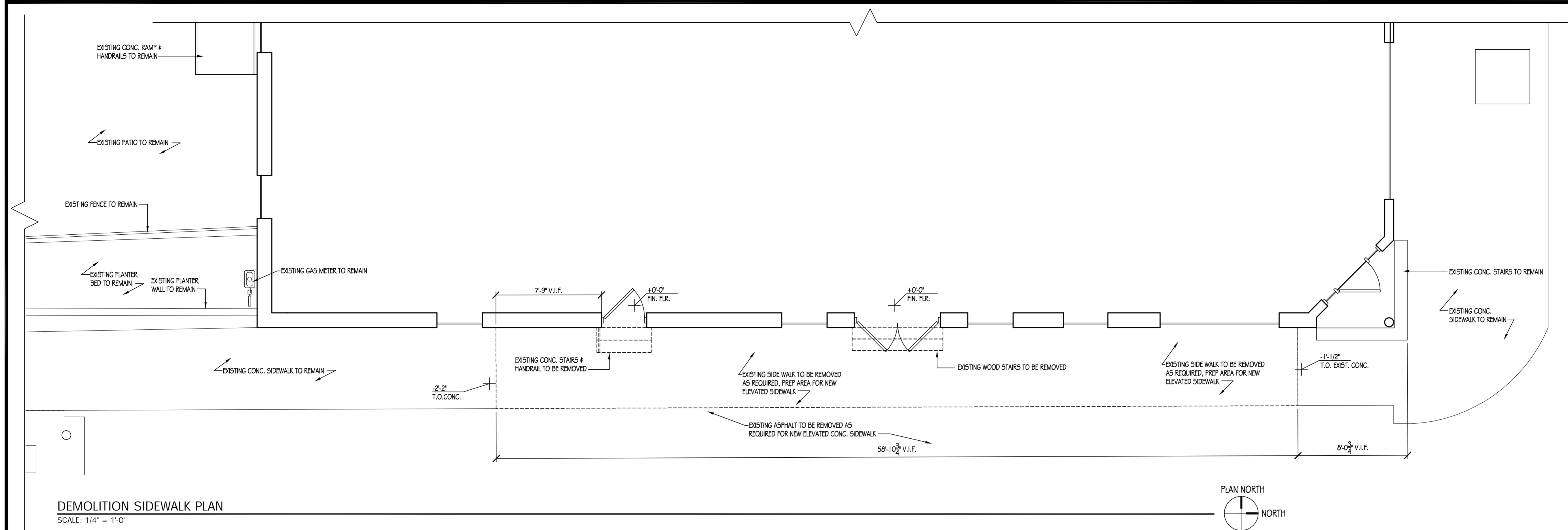


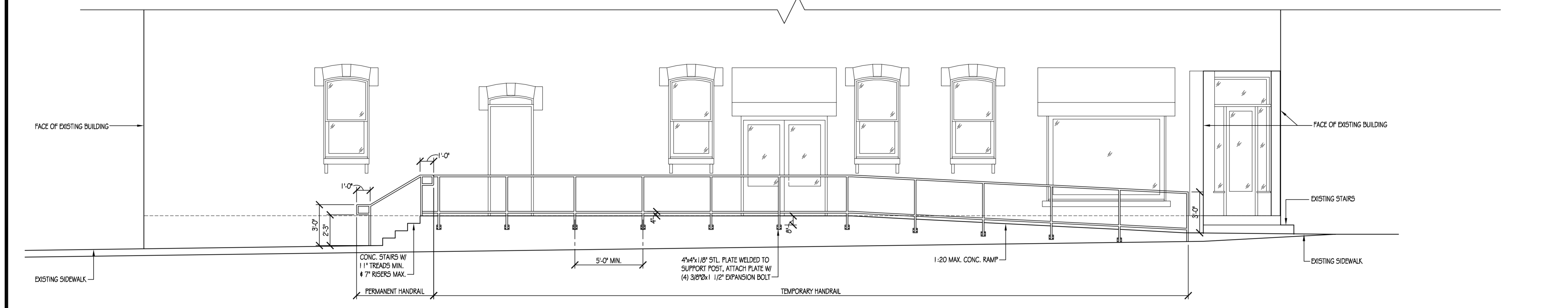
The Professional Architect, whose signature and personal seal appear on this document, assumes responsibility only for what appears hereon, and disclaims responsibility for all other plans, specifications, estimates, reports, documents or instruments not sealed by the Professional Architect relating to, or intended to be used for, any part or parts of the architectural project to which this document refers. Prints sealed by the Architect bear the embossed or wet seal of the Architect across the signature and date. Copies of this document, as signed and sealed, have been retained by the Professional Architect. The Professional Architect will not be responsible for subsequent changes to the document, unless the changes are made by the Architect or with the Architect's written authorization.

© ANTHONY MIANO ARCHITECT 2009

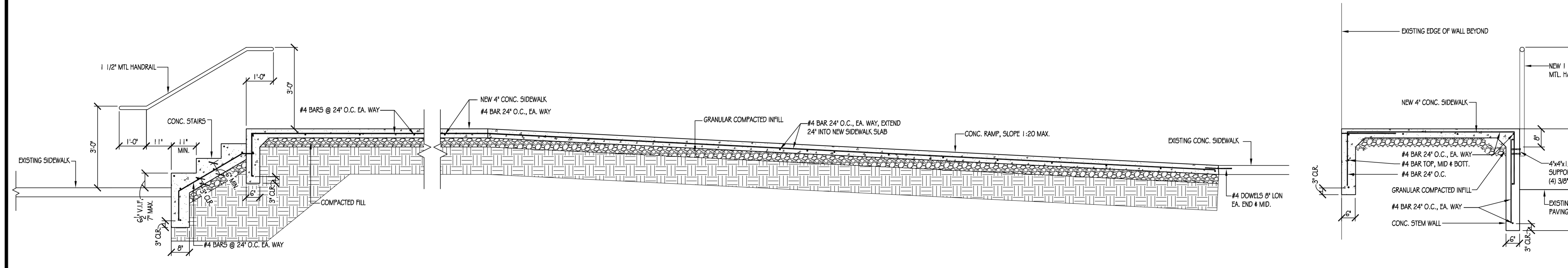
REVISIONS	
No.	DATE



DEMOLITION SIDEWALK PLAN
SCALE: 1/4" = 1'-0"

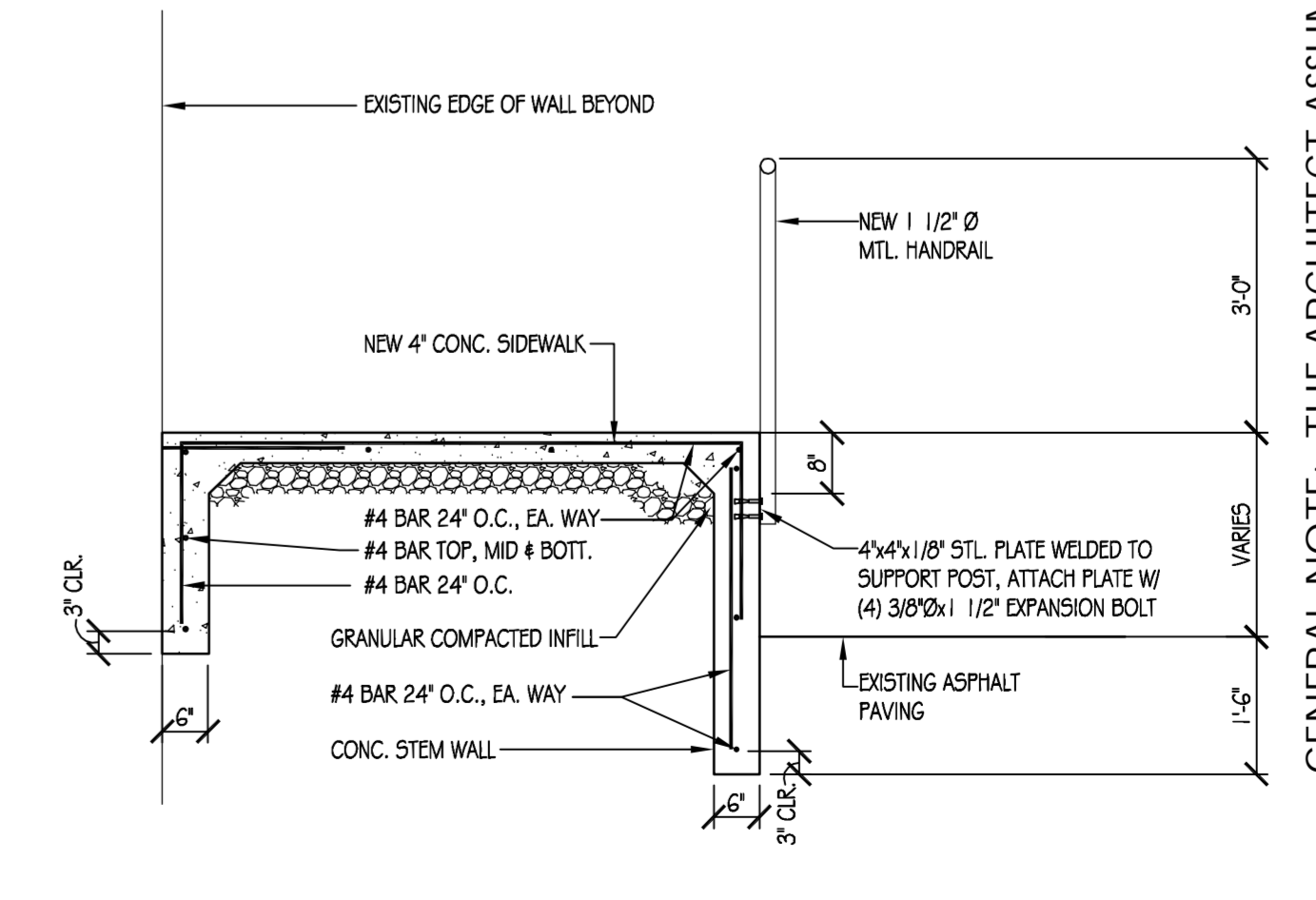


1 SIDEWALK ELEVATION
SCALE: 1/4" = 1'-0"



2 STAIR DETAIL
SCALE: 1/2" = 1'-0"

3 RAMP DETAIL
SCALE: 1/2" = 1'-0"



4 SIDEWALK DETAIL
SCALE: 1/2" = 1'-0"

GENERAL NOTE: THE ARCHITECT ASSUMES NO RESPONSIBILITY FOR WORK WHICH IS NOT IN CONFORMANCE WITH THESE DOCUMENTS

Anthony Miano - Architect
 FARMINGTON, MO 63640
 FAX: (573) 760-8818
 mianoarchitect@sbcglobal.net

3 SOUTH JEFFERSON
 TELE: (573) 760 - 8808
 EMAIL:

CITY OF FARMINGTON
**JEFFERSON ST. PEDESTRIAN
 MALL & PARKING LOT**

DRAWN BY:	MRJ
CHECKED BY:	AJM
PROJ. NO.:	
ISSUE DATE:	10/01/18

DEMOLITION PLAN,
ELEVATION &
DETAILS

DRAWING NO.

AS101